

## *Tetanus toxin*



## Tetanus

Tetanus is a disease caused by a gram-positive bacterium called *Clostridium tetani*. Normally it is introduced into the human body through deep wounds.

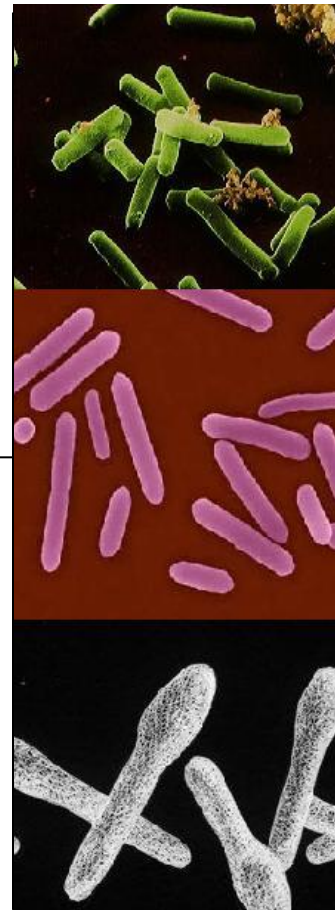
*Clostridium tetani* produces a toxin that affects the nervous system and prevents the body muscle control. In 30% of cases leads to death.

The priority protection is guaranteed by vaccination, but in urgent cases due to deep wounds, the only alternative is based on blood serum injection.

Prophylaxis is a very common practice in the case of adult patients who are normally protected by the vaccine. It is not without risk of infection for other etiological agents.

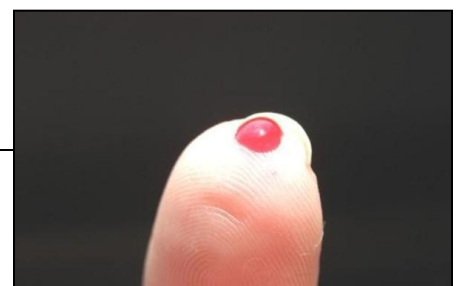
It is therefore essential to check protection against tetanus because analytically determine the protection afforded by vaccination allows you to avoid the infection and prevent the use of immune serum with blood derived products.

The test must allow a diagnostic information quickly and reliably to meet urgent situations.



### Quickspark *Tetanus toxin*

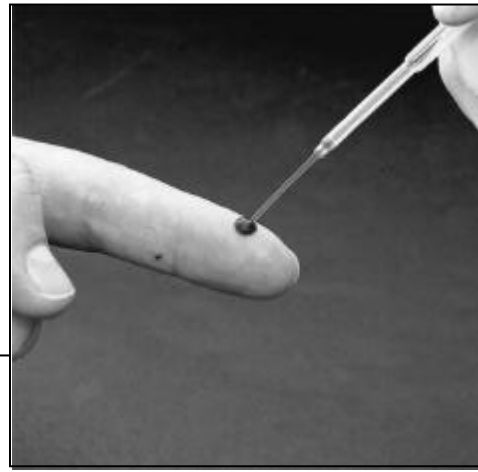
- Easy: only 1 drop of **blood** needed
- Rapid: maximum time to response **10 minutes**
- Sensitive: **detection limit** of 0,1 IU/ml
- Accurate: intra & interassay reliability of **100%**



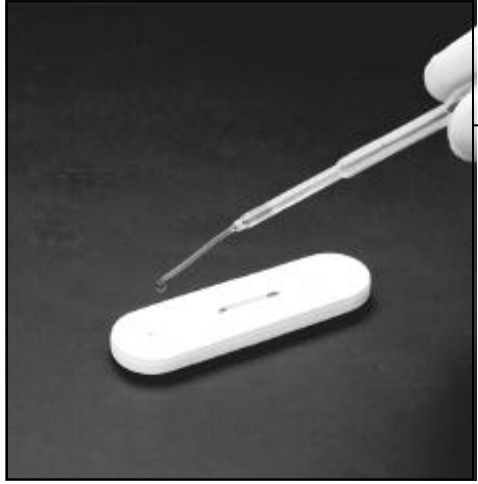
# Quickspark Tetanus toxin: **test procedure**



**Patient preparation**

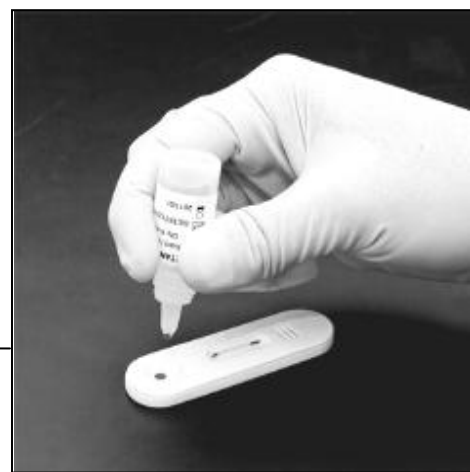


**Sample collection**



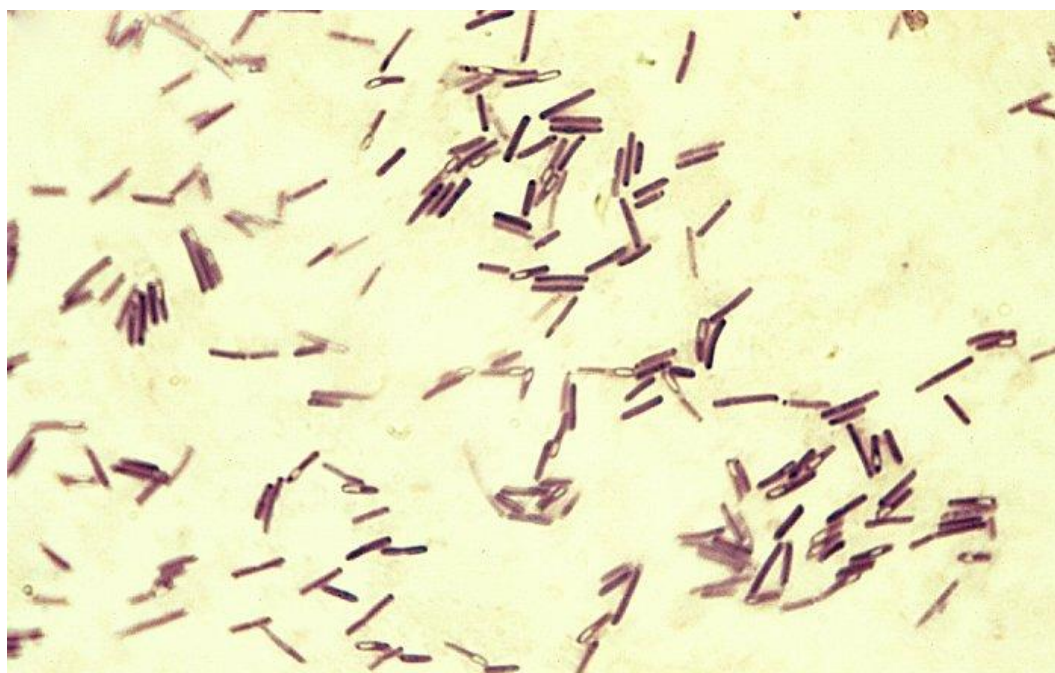
**Sample addition (20 µl)**

**Buffer addition (60 µl)\***



**Result reading (max 10 minutes)\*\***

\*Not needed in case of collection with lancet o \*\* 5 minutes in case of serum samples



**To place an *order***

| Ref. Code | Product name  | No. of test |
|-----------|---------------|-------------|
| RTBA021   | Tetanus toxin | 20          |

**Write to: [orderentry@immunospark.com](mailto:orderentry@immunospark.com)**